

# JF545

**max** 15500 kg

**max** 5450 x 1840 x 2750 mm

**max** 30 m with jib

**max** 28 m with jib

This model combines an articulated truck loader crane with a self-propelled crawler chassis. It offers a glimpse into the future of crawler cranes.



## Technical Information

Dimension	L x W x H	5450 x 1840 x 2750 mm	
Stab Area		6700 x 6700 mm	
Crane & Options Weights		Kg	
	JF545	13700	
	/	3500	
	JIBL426	1200	
	BASKET	200	
Winch		2600 kg	
		36 m - Ø 6 mm	
		36.5-47 m/min.	
JF545	Diesel Engine	KUBOTA V3307-DI-T-E3B	55.4 kW 74 Hp
Speed		2.5 km/h	
Gradeability		30°	



**Boom Length**  
1.0 - 16.2 m 40 sec.

**Electric Power Pack**  
13.5 kW  
400 VAC

**Rotation**  
360° / 1.0 rpm

**Max. Outrigger Load**  
MAX 11.250 kg

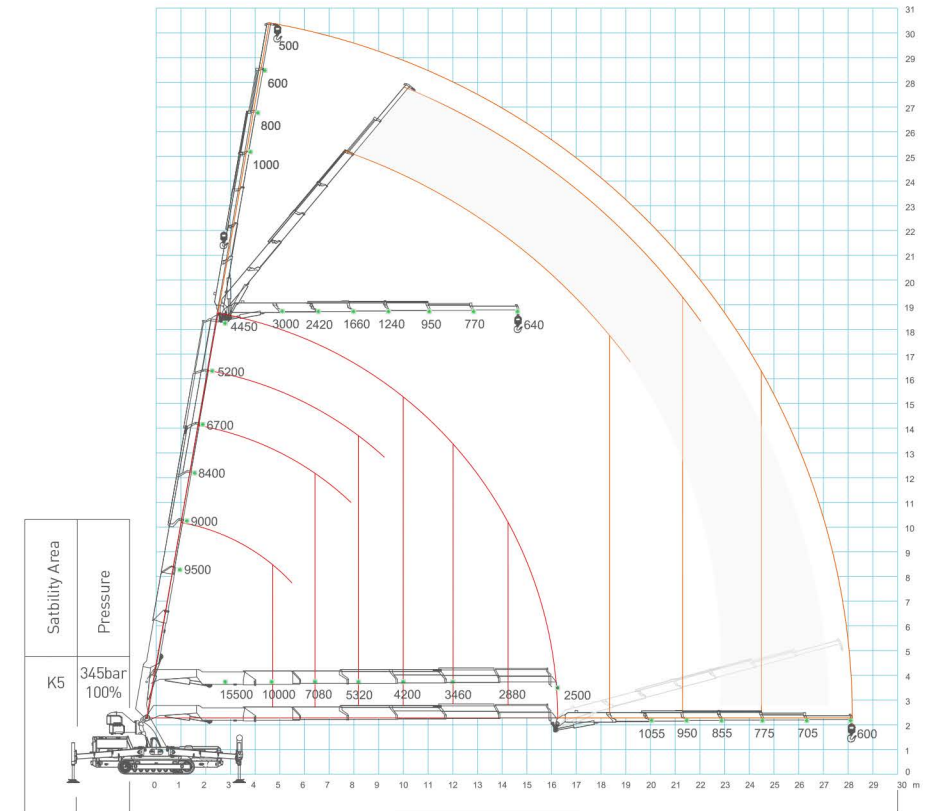
**Working Angle**  
-15° / 80° 30 sec.

**Max. Track Load**  
0.85 kg/cm<sup>2</sup>

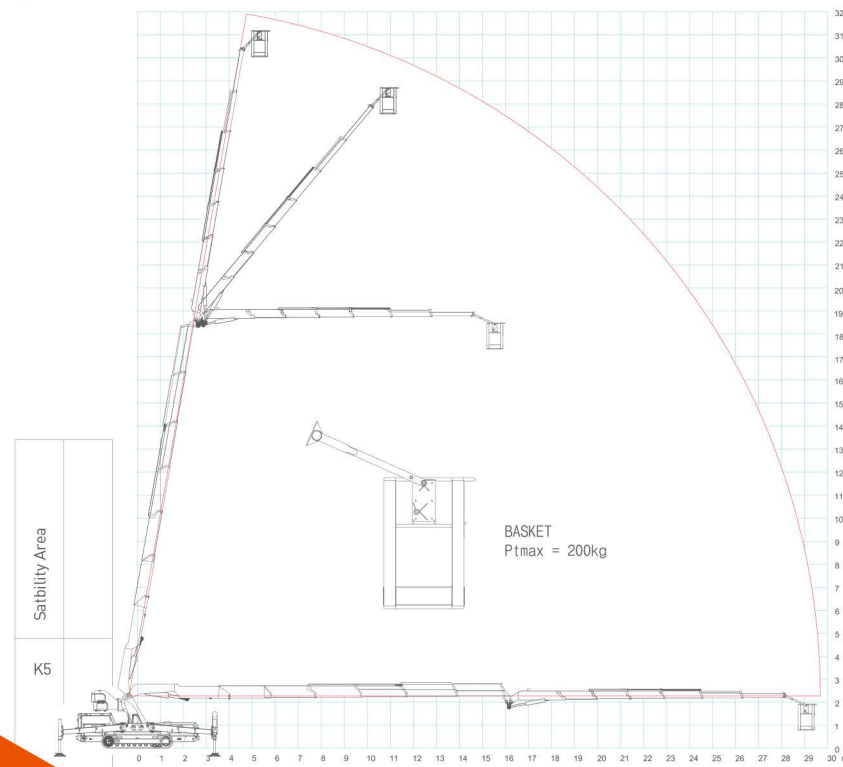
## Crane Options



## Load Chart



## Basket Load Chart



## Dimensions

