

# F3 RE30 CC . RETRACTABLE TAIL-LIFT FOR HEAVY DUTY LOADS - 5 CYLINDERS

- LOAD CAPACITY**
- 2500 KG AT 1000 MM
  - 3000 KG AT 600 MM



RETRACTABLE  
LIFTS



## APPLICATIONS

The 5 cylinders F3RE 30 CC is the heavy duty retractable lift.

The robust lift mechanism, the strong platform and hydraulic gear are designed for intensive, heavy duty applications and "hostile environment" operations.

This lift is perfectly suited for the intensive distribution market, food distribution, drink and beverage distribution.

F3 RE 30 CC is the perfect retractable lift to use in combination of heavy electric transpallet.

The tail-lift is stowed away under the vehicle making it ideal for dock loading operations, for demountable bodies, for occasional use, and all applications requiring quick and free access to the cargo space.

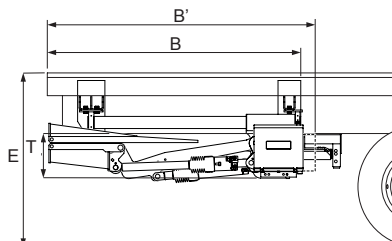
Retraction system with chromed guides, smooth hydraulic automatic tilt, high stiffness ideal to equip vehicles for customers that like high performances with lower maintenance costs.

## TECHNICAL SPECIFICATIONS

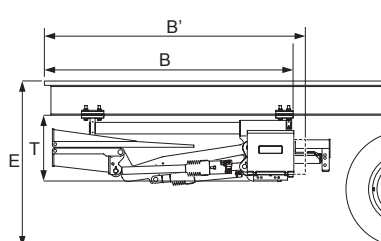
|                                 |   |
|---------------------------------|---|
| Cylinders:                      | 2 lift cylinders + 2 tilt cylinders + 1 automatic tilt cylinder |
| Sliding system:                 | Chromed Guides, Double Extension Cylinder                       |
| Tilt cylinders:                 | Single acting   |
| Automatic tilt at ground level: | Yes, Hydraulic  |
| Platform material:              | Aluminium   |
| Standard platform depths Alu:   | 1 fold 1641 - 1841 - 2041 mm (max 2341 mm)                      |
| Standard platform widths Alu:   | 2100 - 2250 - 2400 mm (Max 2500)                                |
| Lift arm lengths:               | C - H - HS - HSS  |
| Lift arm widths (W):            | 750 - 1250 mm   |
| Standard control:               | Unit Exterior control box with joystick, turn button            |



SIDE FITTING FOR RIGID VEHICLE  
1 FOLD PLATFORM



QUICK FITTING FOR SEMI-TRAILER  
1 FOLD PLATFORM



| Mod.           | Load capacity<br>(centre of gravity at 600 mm) | Std. Platform Dimensions |       | Weight*<br>Kg | E<br>max | B<br>min | B'<br>min | T   |
|----------------|--|--------------------------|-------|---------------|----------|----------|-----------|-----|
|                |  | Depth                    | Width |               |          |          |           |     |
| F3 RE 30 H CC  | 3000 Kg  | 1630 (530+1100)          | 2450  | 850           | 1390     | 1635     | 1730      | 340 |
| F3 RE 30 HS CC |  | 1730 (530+1200)          |       | 870           | 1620     | 1845     | 1940      | 340 |

\*Approximate weight for tail-lift with platform dimensions 1630 mm x 2450 mm.

Platforms depth from 1333 mm to 1983 mm. All dimensions are in mm unless otherwise specified. Anteo reserves the right to change weights and technical specifications without prior notice. No indemnity for damages can be claimed from Anteo for changes in technical specifications and/or in weight.