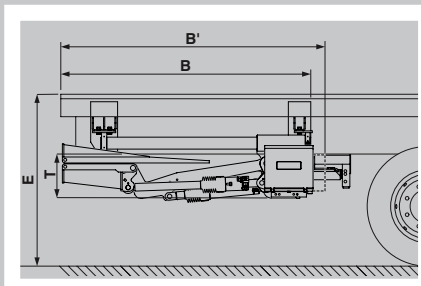




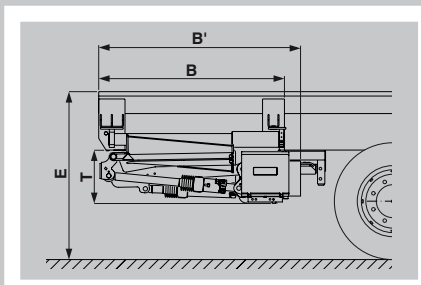
F3 RE 17/22 CC . RETRACTABLE TAIL-LIFT CHROMED GUIDES, DOUBLE EXTENSION CYLINDER - 5 CYLINDERS

LOAD CAPACITY

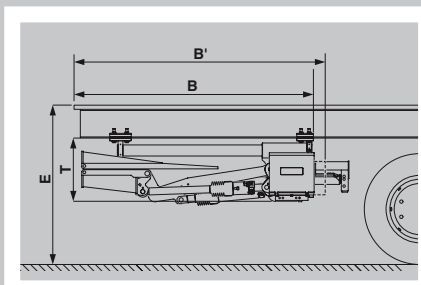
- 1700 KG
- 2200 KG



Side fitting for rigid vehicle - 1 fold platform



Side fitting for rigid vehicle - 2 folds platform



Quick fitting for semi-trailer - 1 fold platform



APPLICATIONS

The 5 cylinders F3RE 17/22 CC are very strong lifts, with very high performances for intensive usage.

F3RE 17/22 CC with Chromed Guides, so premium quality, perfect alignment, low maintenance for demanding applications in the regular transport business, such as supermarket and food distribution.

Smooth hydraulic automatic tilt, high stiffness ideal to equip vehicles for customers that like high performances.

The 5 - cylinders F3CL 17/22 are extremely versatile lifts suitable for commercial trucks above 7.5T GVW, rigids, trailers and semi-trailers.

TECHNICAL SPECIFICATIONS

| | |
|---------------------------------|--|
| Cylinders: | 2 lift cylinders + 2 tilt cylinders + 1 automatic tilt cylinder |
| Sliding system: | Chromed Guides, Double Extension Cylinder |
| Tilt cylinders: | Single acting |
| Automatic tilt at ground level: | Yes, Hydraulic |
| Platform material: | Aluminium |
| Standard platform depths Alu: | 1 fold 1483 - 1683 - 1783 mm (max 2033) 2 folds 1333 - 1633 - 1833 mm |
| Standard platform widths Alu: | 2100 - 2250 - 2400 mm (Max 2500) |
| Lift arm lengths: | C - H - HS - HSS |
| Lift arm widths (W): | 780 - 1230 - 1520 mm |
| Standard control: | Unit Exterior control box with joystick, turn button |

| | Mod. | Load capacity (center of gravity at 600 mm) | E max | Platform Depth* (example) | SIDE FITTING FOR RIGID VEHICLE | | | | QUICK FITTING FOR SEMI-TRAILER | | | |
|------------------|----------------|--|----------|------------------------------|--------------------------------|-----------|-----|----------------|--------------------------------|-----------|-----|----------------|
| | | | | | B min | B' min | T | Weight Kg** | B min | B' min | T | Weight Kg** |
| 1 FOLD PLATFORM | F3 RE 17 C CC | 1700 kg | 1130 | 1433 (550 + 883) | 1458 | 1553 | 298 | 580 | - | - | - | - |
| | F3 RE 17 H CC | | 1290 | 1633 (750 + 883) | 1760 | 1855 | 298 | 605 | 1809 | 1854 | 453 | 605 |
| | F3 RE 17 HS CC | | 1530 | 1633 (750 + 883) | 1912 | 2007 | 298 | 630 | 1962 | 2007 | 453 | 630 |
| | F3 RE 22 C CC | 2200 kg | 1130 | 1433 (550 + 883) | 1458 | 1553 | 298 | 600 | - | - | - | - |
| | F3 RE 22 H CC | | 1290 | 1633 (750 + 883) | 1760 | 1855 | 298 | 625 | 1809 | 1854 | 453 | 625 |
| | F3 RE 22 HS CC | | 1530 | 1633 (750 + 883) | 1912 | 2007 | 298 | 650 | 1962 | 2007 | 453 | 650 |
| 2 FOLDS PLATFORM | F3 RE 17 C CC | 1700 kg | 1130 | 1083 (600 + 483) | 1022 | 1132 | 366 | 510 | - | - | - | - |
| | F3 RE 17 H CC | | 1290 | 1283 (700 + 583) | 1122 | 1232 | 366 | 545 | 1160 | 1220 | 521 | 545 |
| | F3 RE 17 HS CC | | 1530 | 1583 (850 + 733) | 1272 | 1382 | 366 | 610 | 1315 | 1375 | 521 | 610 |
| | F3 RE 22 C CC | 2200 kg | 1130 | 1083 (600 + 483) | 1022 | 1132 | 366 | 530 | - | - | - | - |
| | F3 RE 22 H CC | | 1290 | 1283 (700 + 583) | 1122 | 1232 | 366 | 565 | 1160 | 1220 | 521 | 565 |
| | F3 RE 22 HS CC | | 1530 | 1583 (850 + 733) | 1272 | 1382 | 366 | 630 | 1315 | 1375 | 521 | 630 |

*For 1 fold platform: platforms depth available from 1333 mm to 1983 mm. **Approximate weight for tail-lift with platform width 2450 mm. Centre of gravity of the vehicle depending on the type of arm and the size of the installations on the vehicle (see assembly instructions).

The above mentioned weights are approximate and may vary according to production. Anteo reserves the right to change weights and technical specifications without prior notice. No indemnity for damages can be claimed from Anteo for changes in technical specifications and/or in weight.

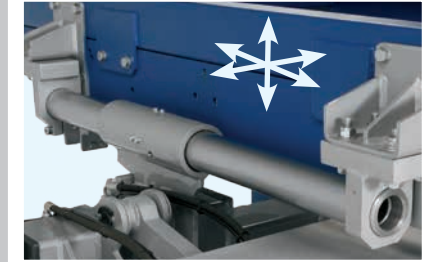
F3 RE 17/22 CC . RETRACTABLE TAIL-LIFT CHROMED GUIDES, DOUBLE EXTENSION CYLINDER - 5 CYLINDERS

LOAD CAPACITY

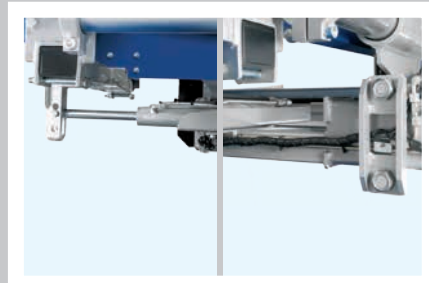
- 1700 KG
- 2200 KG



RETRACTABLE
LIFTS



The chrome-plated guide can be adjusted longitudinally, horizontally and vertically



Bolted double extension cylinder and Bolted assembly brackets to main-beam



Chrome-plated guides and bushings, precise and durable, always aligned

The above mentioned weights are approximate and may vary according to production. Anteo reserves the right to change weights and technical specifications without prior notice. No indemnity for damages can be claimed from Anteo for changes in technical specifications and/or in weight.