

F3 CLA30 . SPECIAL TAIL-LIFTS FOR ANIMALS 5 CYLINDERS

- LOAD CAPACITY**
- 3000 KG AT 600 MM
 - 2500 KG AT 1000 MM



CANTILEVER
LIFTS



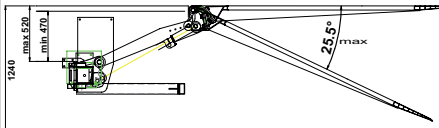
Safety gates and anti-skid not supplied

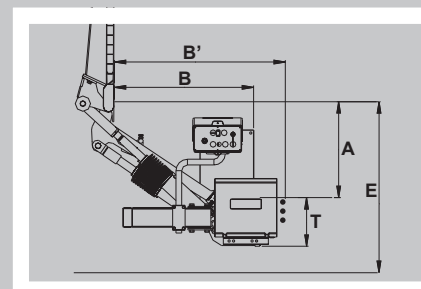
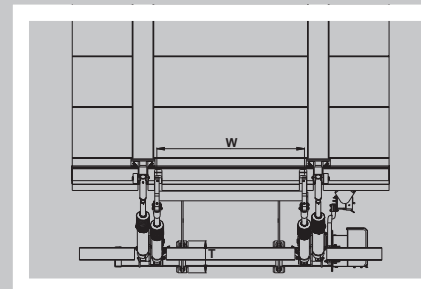
APPLICATIONS

The tail lift F3 CLA30 is the ideal tail lift for use in animals transportation.

F3 CLA30 is suitable for trucks, semi-trailers and vehicle with low drawbar coupling.

TECHNICAL SPECIFICATIONS

Cylinders:	2 lift cylinders + 2 tilt cylinders + 1 automatic tilt cylinder
Tilt cylinders:	Double acting
Platform inclination:	
Platform opening:	Powered opening
Automatic tilt at ground level:	Yes, Hydraulic
Platform material:	Aluminium or steel
Platform overlap under floor:	-75 mm
Standard platform depths Steel:	Not available
Standard platform depths Alu:	2600 mm
Standard platform widths Steel:	Not available
Standard platform widths Alu:	2450 mm (max 2600) 2520 mm (max 2600)
Lift arm lengths:	HS
Lift arm widths (W):	1250 mm
Standard control:	Unit Exterior control box with joystick, turn button
Weights incl. CE bumper	



Mod.	Load capacity (centre of gravity at 600 mm)	Std. Platform Dimensions		Weight * Kg	E	A			B	B'	T	Arm Length	Arm Width (centre to centre) W 125
		Depth	Width			min	max	min					
F3 CL 30 HS	3000 kg	2600	2500	670	1240	470	520	810	960	295	1003	1250	

*Indicative weight of tail-lift supplied in kit without rear bumper and with a 1800 mm depth platform.

The weight may vary according to width.

All dimensions are in mm unless otherwise specified. Anteo reserves the right to change weights and technical specifications without prior notice. No indemnity for damages can be claimed from Anteo for changes in technical specifications and/or in weight.